

FS200/250/350 HD

HEAVY DUTY

FLOOR SCARIFIER

Technical Data	
Parts manual	136.1080
Product manual machines	PM.06
Product manual consumables	PM.07
Design file	DF.30

Customs Tariff Codes		
	Product	Spares
Scarifiers	846789000	846799000
Consumables	680222900	846799000

<p>GCM Ltd Ratcliffe Buildings, Tuttle Hill, Nuneaton, Warwickshire, United Kingdom. CV10 0GA Tel: 0044(0)24 7635 2540 Fax: 0044(0)24 7637 4349 Email: sales@gcmsales.com</p>	<p>Dealer</p>
---	----------------------



FS200/250/350HD SCARIFIER PARTS MANUAL



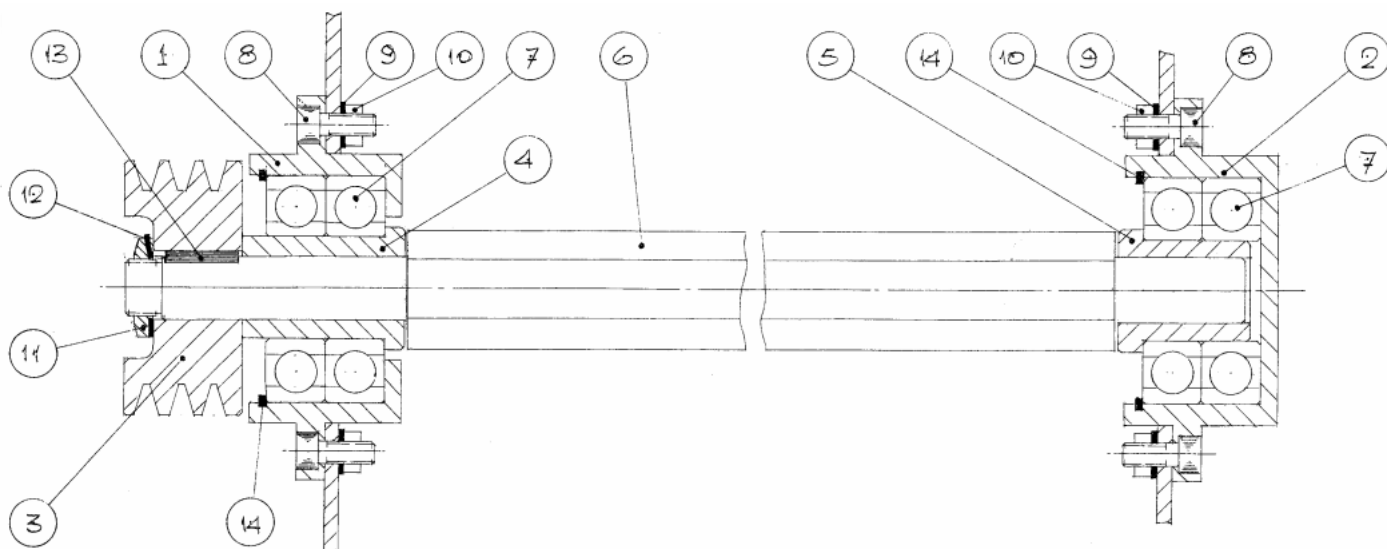
WARRANTY

We warrant that the product is free from defects in materials and workmanship. If such a fault is found within six months from date of purchase from an approved dealer, the company will replace free of charge all failed components.

Any failed unit must be returned carriage paid to the factory for inspection. The warranty does not cover failure attributable to wear and tear, accidental damage, site or operator misuse or lack of maintenance.

We will not accept units under warranty that third parties have attempted to repair or disassembled

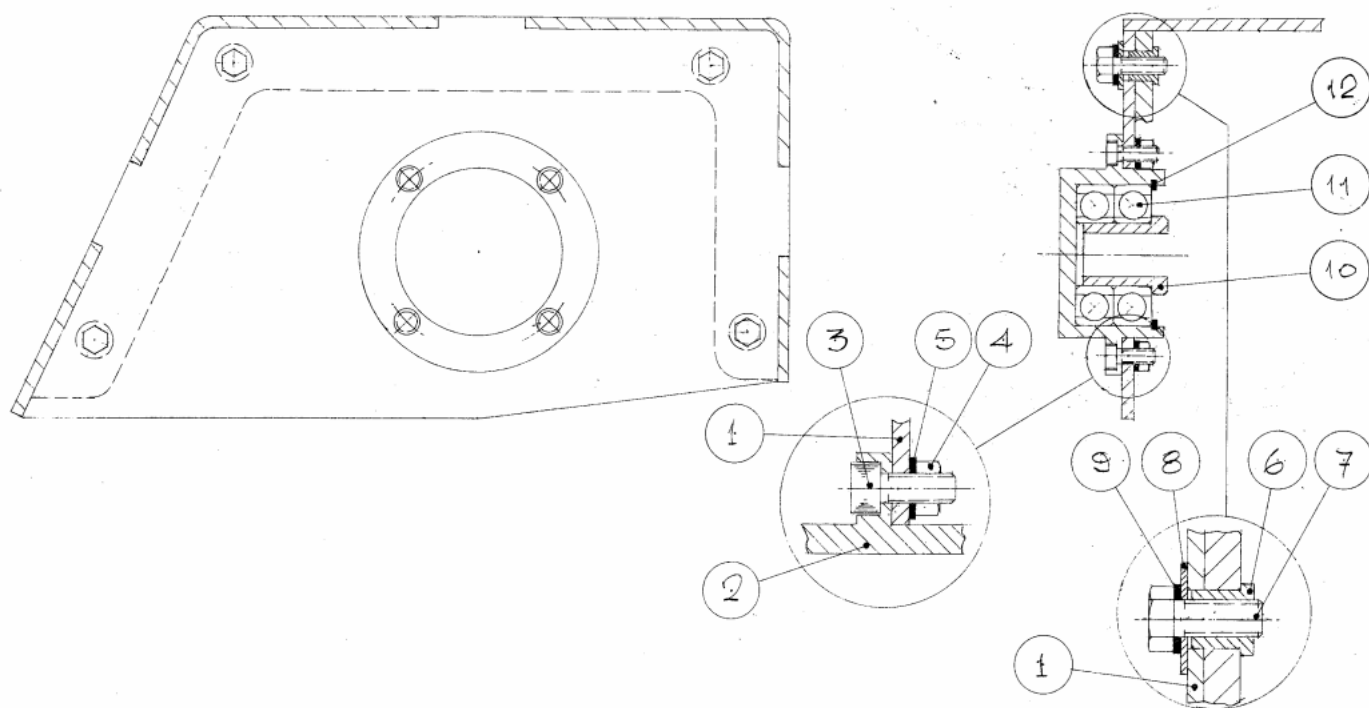
FS200/250/350HD SCARIFIER PARTS MANUAL



SPINDLE ARRANGEMENT (Drawing 500.2060.1)

Item	Description	Qty	FS200HD	FS250HD	FS350HD
1	Bearing housing - drive side	1	512.1020	512.1020	512.1020
1a	Bearing housing assembly	1	512.1020.100	512.1020.100	512.1020.100
2	Bearing housing - slave	1	512.1021	512.1021	512.1021
2a	Bearing housing assembly	1	512.1021.100	512.1021.100	512.1021.100
3	Drive pulley	1	518.1010	518.1010	518.1010
4	Bearing bush	1	514.1011	514.1011	514.1011
5	Bearing bush	1	514.1015	514.1015	514.1015
6	Drive shaft	1	513.1024.1	513.1024.2	513.1024.3
7	Deep groove ball bearing	4	979.1000.41	979.1000.41	979.1000.41
8	Socket head cap screw M8 x 20	8	984.1008.20	984.1008.20	984.1008.20
9	Spring washer M8	8	991.1020.8	991.1020.8	991.1020.8
10	Nylon insert nut M8	8	990.1001.8	990.1001.8	990.1001.8
11	Bearing locknut M20	1	979.1020.20	979.1020.20	979.1020.20
12	Tab washer M20	1	979.1021.20	979.1021.20	979.1021.20
13	Engineers Key	1	976.1606.25	976.1606.25	976.1606.25
14	Circlip 1300-80	2	977.1000.80	977.1000.80	977.1000.80

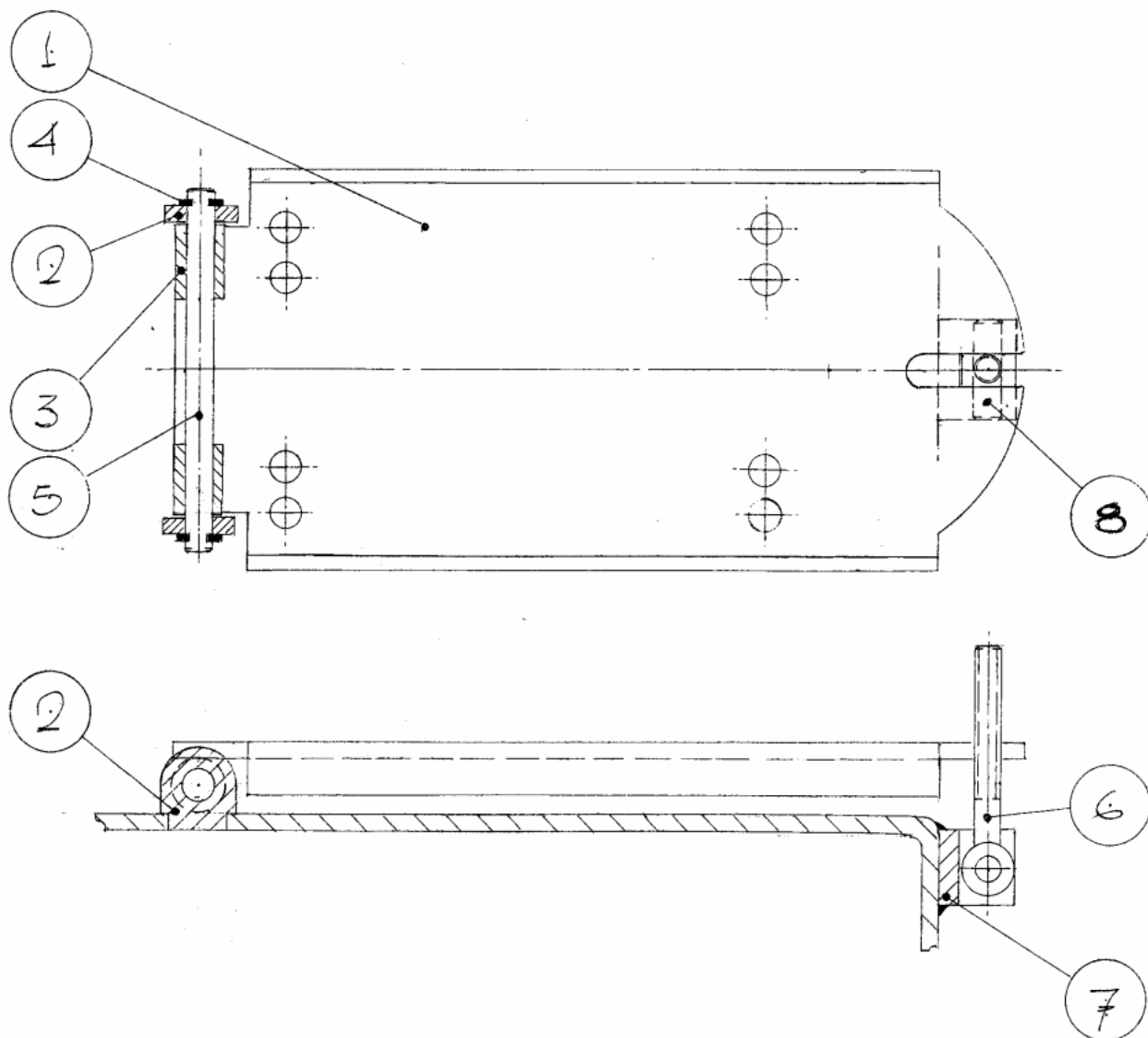
FS200/250/350HD SCARIFIER PARTS MANUAL



REMOVABLE SIDEPLATE ARRANGEMENT (Drawing 500.2060.6)

Item	Description	Qty	FS200HD	FS250HD	FS350HD
1	Removable sideplate assy	1	500.2060.6	500.2060.6	500.2060.10
1a	Removable sideplate	1	511.1123.2	511.1123.2	511.2032.2
2	Bearing housing	1	512.1021	512.1021	512.1021
2a	Bearing housing assy	1	512.1021.100	512.1021.100	512.1021.100
3	Cap head socket screw M8 x 20	4	984.1008.20	984.1008.20	984.1008.20
4	Nylon insert nut M8	4	990.1001.8	990.1001.8	990.1001.8
5	Spring washer M8	4	991.1020.8	991.1020.8	991.1020.8
6	Chassis	4	511.1130.2	511.1131.2	511.2020.2
7	Hex head set screw M10 x 25	4	998.1009.25	998.1009.25	998.1009.25
8	Penny washer M10	4	991.1091.10	991.1091.10	991.1091.10
9	Spring washer M10	4	991.1020.10	991.1020.10	991.1020.10
11	Deep groove ball bearing	2	979.1000.41	979.1000.41	979.1000.41
10	Bearing insert	1	514.1012	514.1012	514.1012
12	Circlip	1	977.1000.80	977.1000.80	977.1000.80

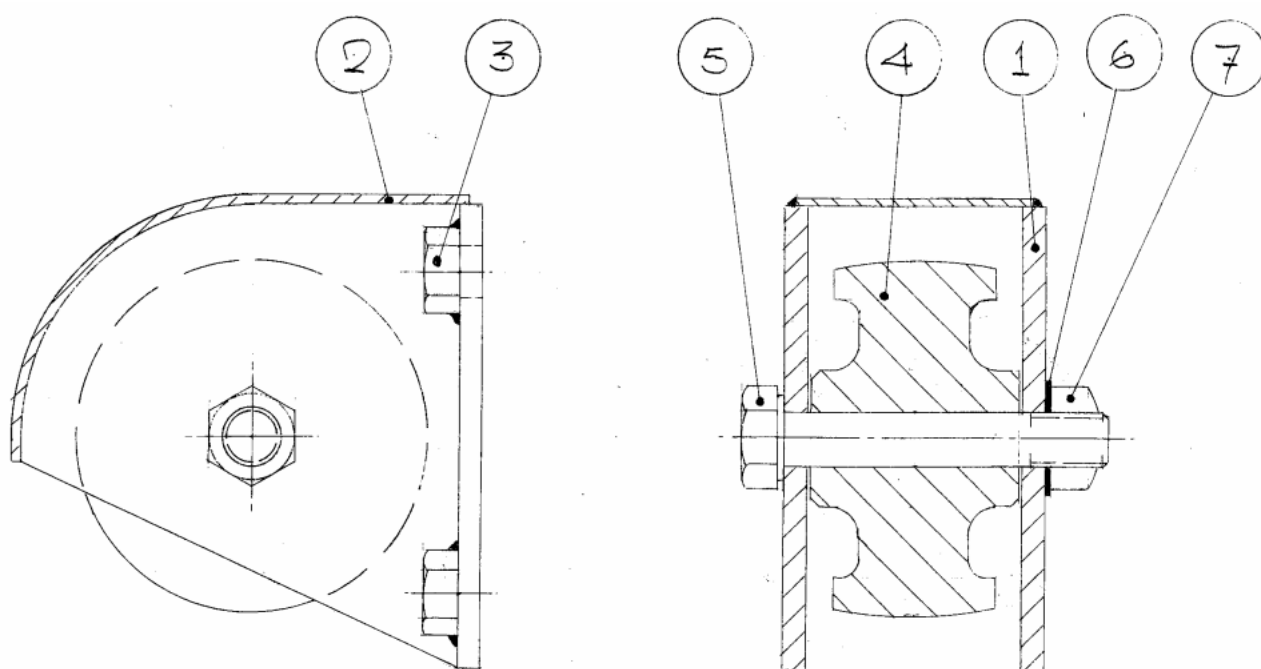
FS200/250/350HD SCARIFIER PARTS MANUAL



ENGINE DECK ARRANGEMENT (Drawing 500.2060.4)

Item	Description	Qty	FS200HD	FS250HD	FS350HD
0	Engine deck arrangement	1		500.2060.4	
1	Engine deck petrol	1	511.1190.1	511.1190.1	511.1190.1
1a	Engine deck electric	1	511.1190.1	511.1190.1	511.1190.1
2	Chassis	1	511.1130.2	511.1131.2	511.2020.2
4	Circlip 1400-12	1			
5	Pivot pin	1	506.1032	506.1032	506.1032
6	Swing bolt	1	506.1036	506.1036	506.1036
8	Swing bolt block	1	511.1128	511.1128	511.1128

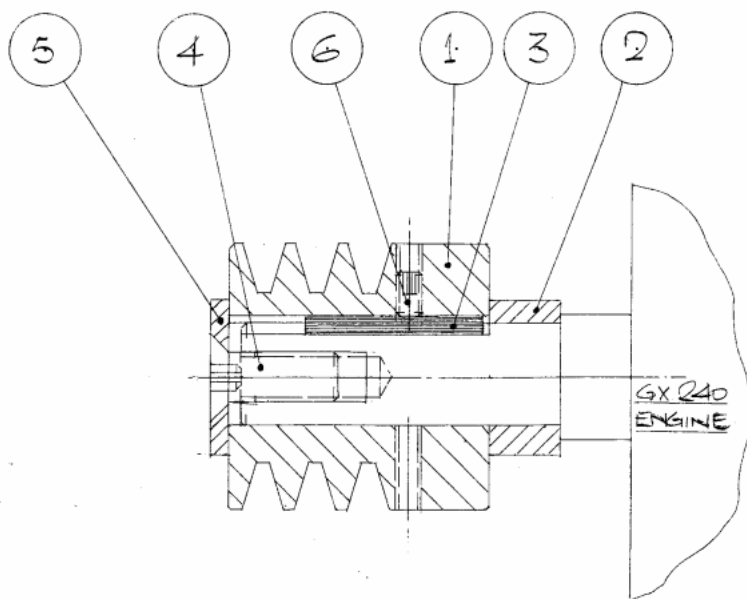
FS200/250/350HD SCARIFIER PARTS MANUAL



CHASSIS- FRONT WHEEL ARRANGEMENT (Drawing 500.2060.5)

Item	Description	Qty	FS200HD	FS250HD	FS350HD
0	Wheel arrangement		500.2060.5	500.2060.5	500.2060.5
1	Front wheel carrier		511.1050	511.1050	511.1050
4	Wheel				
5	Spindle bolt		506.1035	506.1035	506.1035
6	Plain washer M12		991.1001.12	991.1001.12	991.1001.12
7	Nylon insert nut M12		990.1020.12	990.1020.12	990.1020.12

FS200/250/350HD SCARIFIER PARTS MANUAL



ENGINE ARRANGEMENT (Drawing 500.2060.2)

Item	Description	Qty	FS200HD	FS250HD	FS350HD
	Honda Petrol Engine		GX240	GX340	GX340
1	Petrol engine pulley	1	518.1002.3	518.1002.3	518.1002.3
2	Pulley spacer	1	506.1015	506.1015	506.1015
3	Engineers key	1	976.1003.24	976.1003.24	976.1003.24
4	Socket countersunk screw	1	984.1068.25	984.1068.25	984.1068.25
5	Pulley lock washer	1	506.1014	506.1014	506.1014
6	Socket set screw M6 x10	1	980.1007.10	980.1007.10	980.1007.10
7	Honda petrol engine	1	970	970	970

MOTOR ARRANGEMENT (Drawing 500.2060.)

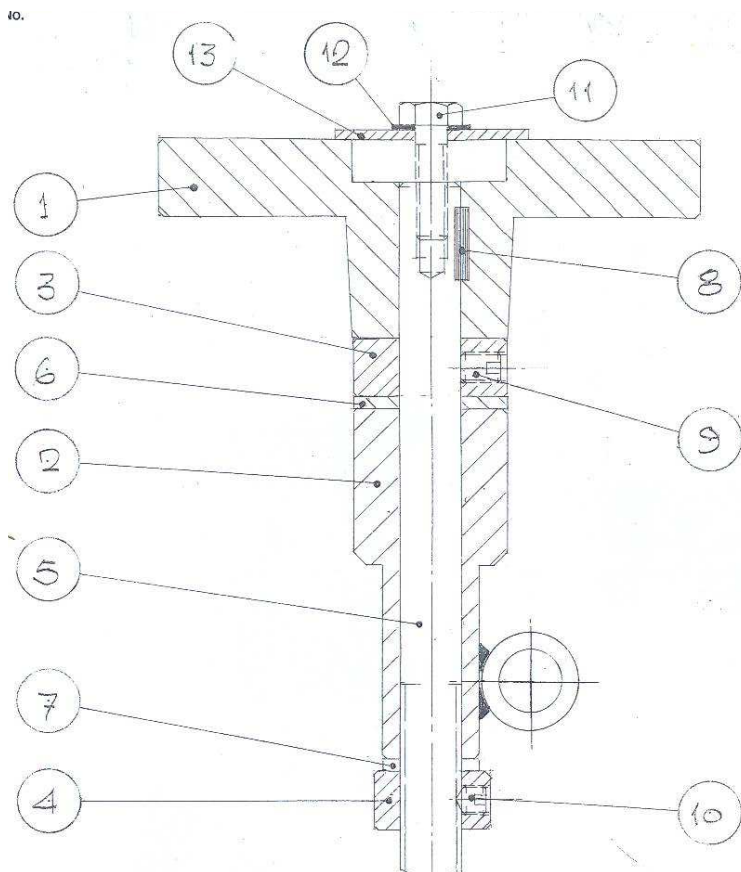
Item	Description	Qty	FS200HD	FS250HD	FS350HD
	Electric motor frame size / Pulley bore		112 / 28 mm	132 / 38 mm	132 / 38 mm
1	Electric Motor pulley		518.1002.3	518.1002.7	518.1002.7
2	Pulley spacer				
3	Engineers key				
4	Socket countersunk screw				
5	Pulley lock washer				
6	Socket set screw M6 x10				
8	Electric motor				
9	Starter				

FS200/250/350HD SCARIFIER PARTS MANUAL

STARTER ARRANGEMENT

Item	Description	Qty	FS200HD	FS250HD	FS350HD
	Starter				
	Full load current of motor				

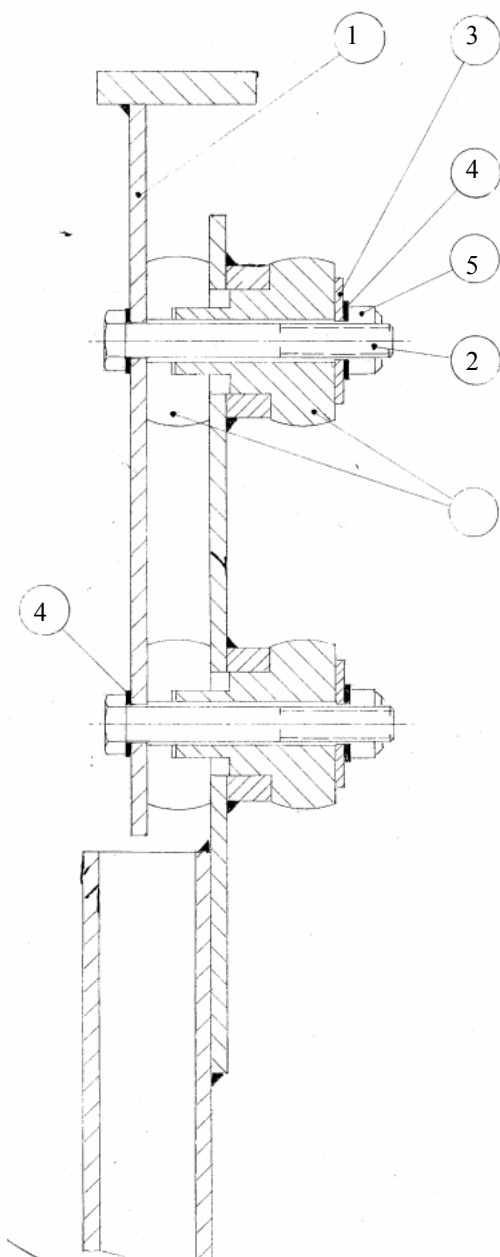
FS200/250/350HD SCARIFIER PARTS MANUAL



HANDLE ARRANGEMENT - HANDWHEEL ADJUSTMENT (Drawing 500.2060.3)

Item	Description	Qty	FS200HD	FS250HD	FS350HD
1	Wheel Rotating Handle	1	506.1043	506.1043	506.1043
2	Elevating tube	1	510.1076	510.1076	510.1076
3	Handle lock washer	1	506.1017.2	506.1017.2	506.1017.2
4	Stop bush	1	510.1081	510.1081	510.1081
5	Elevating screw	1	510.1052	510.1052	510.1052
6	Washer	1	504.1027.40	504.1027.40	504.1027.40
7	Washer	1	504.1027.25	504.1027.25	504.1027.25
8	Engineers key	1	976.1504.20	976.1504.20	976.1504.20
9	Socket set screw	1	980.1008.10	980.1008.10	980.1008.10
10	Socket set screw	1	980.1008.8	980.1008.8	980.1008.8
11	Hex head set screw	1	998.1008.30	998.1008.30	998.1008.30
12	Spring washer	1	991.1020.8	991.1020.8	991.1020.8
13	Washer	1	506.1018	506.1018	506.1018

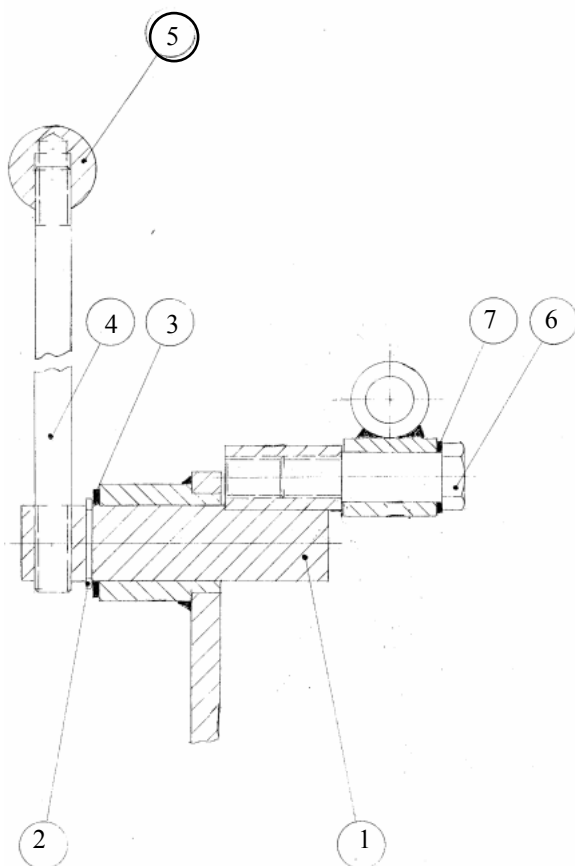
FS200/250/350HD SCARIFIER PARTS MANUAL



HANDLE ARRANGEMENT - ANTI VIBRATION MOUNTING ARRANGEMENT (Drg 510.1132)

Item	Description	Qty	FS200HD	FS250HD	FS350HD
1	Handle extension	2	510.1140.2	510.1140.2	510.1140.2
2	Hex head bolt M12 x 80	4	999.1012.80	999.1012.80	999.1012.80
3	Penny washer M12	4	991.1091.12	991.1091.12	991.1091.12
4	Plain washer M12	8	991.1001.12	991.1001.12	991.1001.12
5	Nylon insert nut M12	4	990.1001.12	990.1001.12	990.1001.12
6	Anti vibration mount	4	968.1008.1	968.1008.1	968.1008.1
7	Main Handle	1	510.1071	510.1071	510.1071

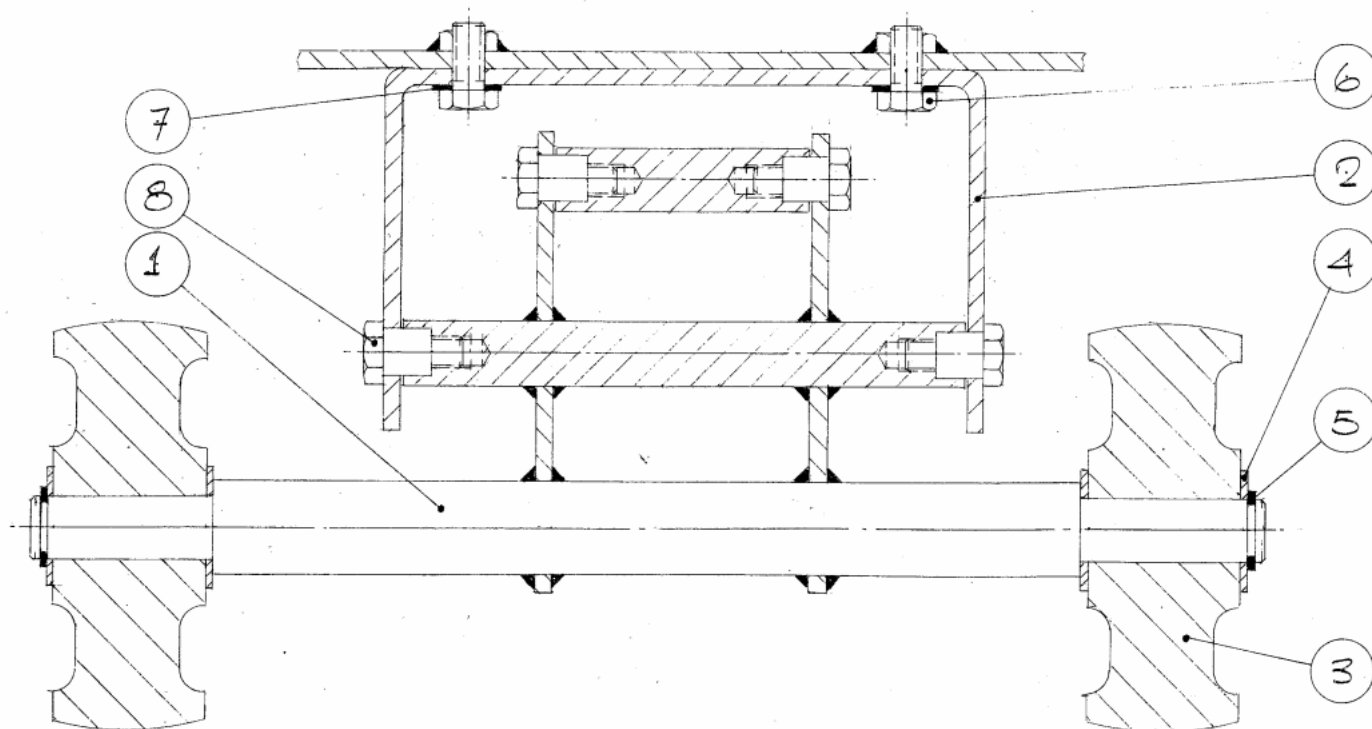
FS200/250/350HD SCARIFIER PARTS MANUAL



HANDLE ARRANGEMENT (Drawing 510.1090)

Item	Description	Qty	FS200HD	FS250HD	FS350HD
1	Main Handle	1	510.1071	510.1071	510.1071
2	Circlip	1	977.1010.25	977.1010.25	977.1010.25
3	Washer	1	510.1091	510.1091	510.1091
4	Handle	1	510.1093	510.1093	510.1093
5	Knob	1	901.1001.132	901.1001.132	901.1001.132
6	Pivot bolt	1	506.1033	506.1033	506.1033
7	Plain washer M16	1	991.1001.16	991.1001.16	991.1001.16

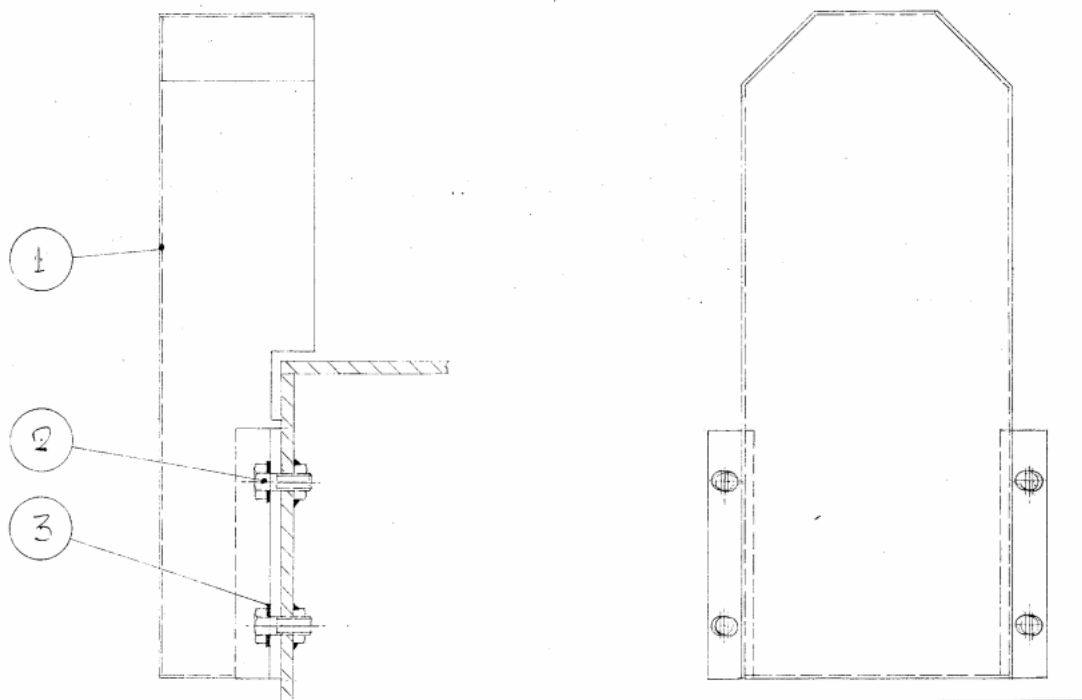
FS200/250/350HD SCARIFIER PARTS MANUAL



REAR WHEEL ARRANGEMENT (Drawing 500.2060)

Item	Description	Qty	FS200HD	FS250HD	FS350HD
1	Wheel chassis	1	515.1070	515.1070	515.1070
2	Support plate	1	515.1080	515.1080	515.1080
3	Wheel	2	905.1000.4	905.1000.4	905.1000.4
4	Plain washer M20	4	991.1001.20	991.1001.20	991.1001.20
5	Circlip	2	977.1011.20	977.1011.20	977.1011.20
6	Hex head bolt M10 x 20	4	998.1009.20	998.1009.20	998.1009.20
7	Plain washer M10	4	991.1001.10	991.1001.10	991.1001.10
8	Pivot bolt	4	515.1048	515.1048	515.1048

FS200/250/350HD SCARIFIER PARTS MANUAL



BELT GUARD ARRANGEMENT (Drawing 500.2060.6)

Item	Description	Qty	FS200HD	FS250HD	FS350HD
1	Belt guard	1	505.2110	505.2110	505.2110
2	Hex head set screw M10 x 20	4	998.1009.20	998.1009.20	998.1009.20
3	Spring washer M10	4	991.1020.10	991.1020.10	991.1020.10
4	Plain washer M10	4	991.1001.10	991.1001.10	991.1001.10
5a	Drive Belt Electric	3			
5b	Drive Belt Petrol	3			

The background features a large, stylized, light blue 'GCM' logo. The letters are bold and blocky, with a slight shadow effect. The 'G' and 'C' are rounded, while the 'M' is more angular. The logo is centered horizontally and vertically on the page.

GCM

GCM Ltd

Ratcliffe Buildings,
Tuttle Hill,
Nuneaton,
Warwickshire,
United Kingdom.
CV10 0GA

Tel: 0044(0)24 7635 2540

Fax: 0044(0)24 7637 4349

Email: sales@gcmsales.com

Dealer